



Design Features:

- Butterfly Valve 2" - 4"
- Max PSI 175 @ 70F (2-3")
- Max PSI 70 @ 70F (4")
- Manual Override Capabilities
- NEMA 6P Actuator housing
- Disk: 316 SS
- Stem: 316 SS
- Valve Body: Cast Iron (2-3")
Cast Aluminum (4")
- Seat: EPDM, BUNA, VITON

50 Series Butterfly Valves				
Valve	Size	Port Type	Weight (lbs.)*	C _v
i	2"	FULL	10.9	277
K	3"	FULL	13.3	720
L	4"	FULL	12.0	1366

*Weight of Actuator Valve Assembly for EH4, add 4.4 lbs.

C_v = GPM @ 1psi drop, water
For GPM @ 5 PSI drop multiply C_v x 2.25
Vacuum service to 29 inches HG

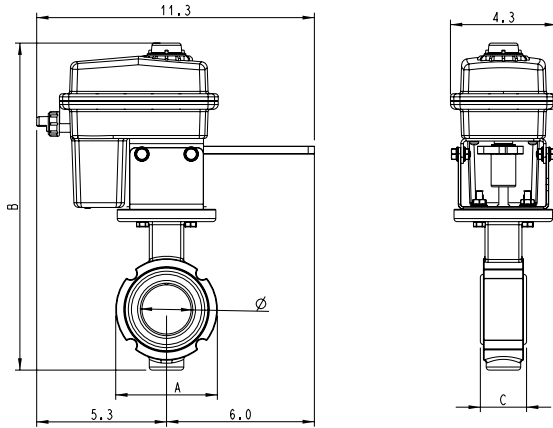
Temperature Range (°F) of Seats		
Type	Minimum	Maximum
EPDM	-40	250
BUNA	0	212
VITON	0	400

Valve & Actuator Selection Guide			
Valve	Size	EH2	EH4
i	2"	X	X
K	3"	X	X
L	4"		X

HOW TO ORDER BY PART NUMBER

57K - 60R - W - 4

VALVE SERIES	VALVE SIZE	WIRING OPTION	MOTOR	OPTION
57 - BUTTERFLY VALVE, BUNA SEATS 58 - BUTTERFLY VALVE, VITON SEATS 59 - BUTTERFLY VALVE, EPDM SEATS (2" AND 3" CAST IRON VALVE BODY) (4" ALUMINUM VALVE BODY)	i - 2" K - 3" L - 4"	60AR - 3 wire on/off (+) SPST 12 VDC 60R - 4 wire on/off with feedback 55R - 4 wire on/off SPST 12VDC 50R - 2 wire DPDT 41R - 2 wire DPDT with 5k Pot. 41SR - DPDT with pot. for SL Control 60RE - SPST with 2 dry switches 50RE - DPDT with 2 dry switches 60RF - SPST with two 12V outputs Addition of R option required for resilient seated 50 series 3" and 4" Other options available, consult factory	U - 8 SEC W - 3 SEC Y - 1.5 SEC Z - .5 SEC All @ 13.8 VDC V - .75 SEC* *24V Only	- BLANK FOR NO OPTION 4 - EH4 B - BLANK LID (NO DOME) ON MOTOR CASE C - "NC" NORMALLY CLOSED H - "LESS VALVE" KIT O - "NO" NORMALLY OPEN V - 180 DEGREE OPERATION M - Manual



EH2 CYCLE TIME AND VOLTAGE

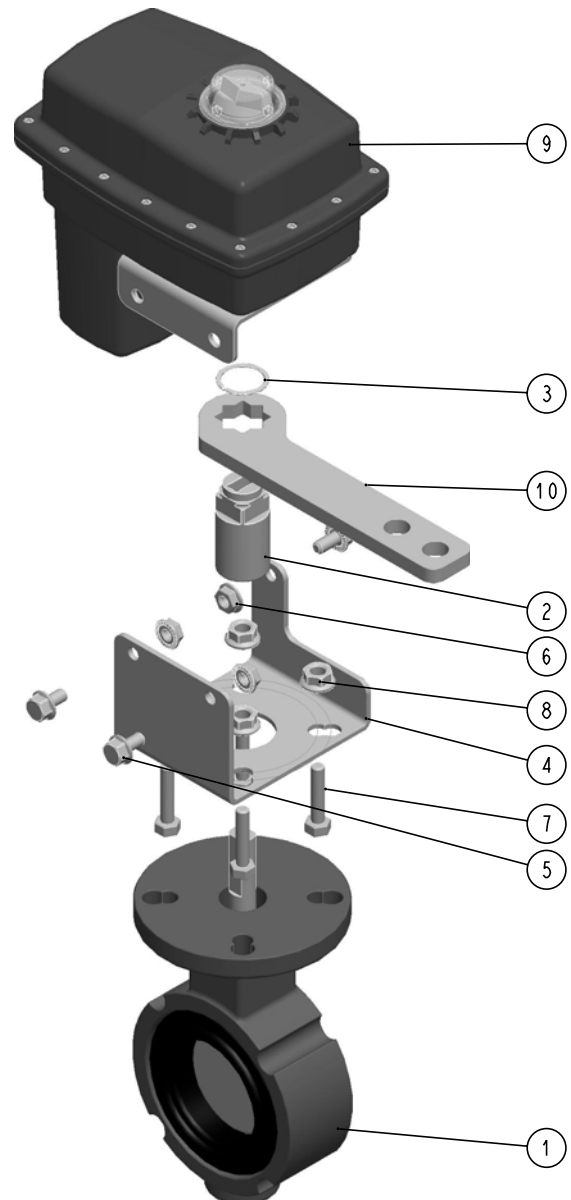
MOTOR	12 VDC	24 VDC	24 VAC
U	8 sec	4 sec	4 sec
V	n/a	.75 sec	.75 sec
W	3 sec	1.5 sec	1.5 sec
Y	1.5 sec	n/a	n/a

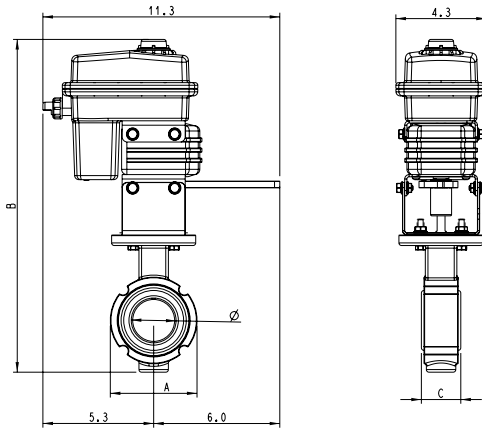
VALVE	SIZE	A	B	C
i	2"	4.2	13.3	1.6
K	3"	5.4	14.8	1.8

Materials List

No.	P/N	Description	Qty
1	EHPT-57i EHPT-57K EHPT-58i EHPT-58K EHPT-59i EHPT-59K	Butterfly Valve, 2" BUNA Butterfly Valve, 3" BUNA Butterfly Valve, 2" VITON Butterfly Valve, 3" VITON Butterfly Valve, 2" EPDM Butterfly Valve, 3" EPDM	1
2	EHPT-1110 EHPT-1106	Coupler, Butterfly Valve, SS (2-3") Coupler, Butterfly Valve, SS (4")	1
3	100289*	Retainer Ring - Smalley, SS	
4	100255	Bracket, Butterfly Valves, SS	1
5	100204	Bolt, Serrated Flange Hex, .250-20 UNC-2A x .5, SS	3
6	QX-222	Nut, Serrated Flange Hex, .250-20 UNC 2B, SS	3
7	EHPT-101	Bolt, 5/16-18 x 1 1/4" UNC, SS	4
8	EHPT-191	Nut, 5/16-18 UNC, SS	4
9		Actuator	1
10	100199*	Handle, FO Series Coupler, SS	1

*Manual Override only





EH4 CYCLE TIME AND VOLTAGE

MOTOR	12 VDC	24 VDC	24 VAC
U	16 sec	8 sec	8 sec
V	n/a	1.5 sec	1.5sec
W	6 sec	3 sec	3 sec
Y	3 sec	n/a	n/a

VALVE	SIZE	A	B	C
i	2"	4.2	15.9	1.6
K	3"	5.4	17.4	1.8
L	4"	6.9	19.3	2

Materials List

No.	P/N	Description	Qty
1	EHPT-57i EHPT-57K EHPT-57L EHPT-58i EHPT-58K EHPT-58L EHPT-59i EHPT-59K EHPT-59L	Butterfly Valve, 2" BUNA Butterfly Valve, 3" BUNA Butterfly Valve, 4" BUNA Butterfly Valve, 2" VITON Butterfly Valve, 3" VITON Butterfly Valve, 4" VITON Butterfly Valve, 2" EPDM Butterfly Valve, 3" EPDM Butterfly Valve, 4" EPDM	1
2	EHPT-1110 EHPT-1106	Coupler, Butterfly Valve, SS (2-3") Coupler, Butterfly Valve, SS (4")	1
3	100289*	Retainer Ring - Smalley, SS	
4	100255	Bracket, Butterfly Valves, SS	1
5	100204	Bolt, Serrated Flange Hex, .250-20 UNC-2A x .5, SS	3
6	QX-222	Nut, Serrated Flange Hex, .250-20 UNC 2B, SS	3
7	EHPT-101	Bolt, 5/16-18 x 1 1/4" UNC, SS	4
8	EHPT-191	Nut, 5/16-18 UNC, SS	4
9		EH4 Actuator with Gear Box	1

