

Design Features:

- 2 Way Ammonia Ball Valves 1" - 1 1/4"
- Max PSI 800
- Manual Override Capabilities
- NEMA 6P Actuator housing
- Ball: 316 SS
- Stem: 316 SS
- Valve Body: Carbon SS
- Seat: Virgin PTFE
- Stem Packing: PTFE



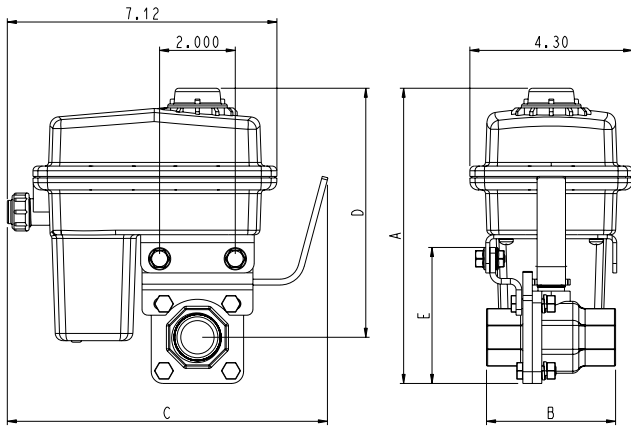
68 Series 2-Way Ball Valves				
Valve	Size	Port Type	Weight (lbs.)*	C _v
F	1"	STANDARD	3	43
G	1 1/4"	STANDARD	4	48

*Weight of Actuator Valve Assembly
 Cv = GPM @ 1 psi drop, water
 For GPM @ 5 PSI drop multiply Cv x 2.25
 Vacuum service to 29 inches HG

HOW TO ORDER BY PART NUMBER

68G - 60A - W -

VALVE SERIES	VALVE SIZE	WIRING OPTION	MOTOR	OPTION
68 - 2-WAY WITH VENTED SS BALL, AMMONIA BALL VALVES	F - 1" G - 1 1/4"	60A - 3 wire on/off (+) SPST 12VDC 60T - 3 wire on/off (-) SPST 12VDC 60 - 4 wire on/off with feedback, + output @ OPEN 66 - 3 wire on/off SPST 24VAC 55 - 4 wire on/off SPST 12VDC 50K - 2 wire DPDT 41 - 2 wire DPDT with 5k Pot. 62 - 4 wire regulating 12VDC 41S - SL Series Control 60AE - 60A with 2 dry switches 50KE - 50K with 2 dry switches 60F - SPST with two 12V + outputs Other options available, consult factory	U - 8 SEC W - 3 SEC Y - 1.5 SEC Z - .5 SEC All @ 13.8 VDC V - .75 SEC* *24V Only	- BLANK FOR NO OPTION C - "NC" NORMALLY CLOSED H - "LESS VALVE" KIT O - "NO" NORMALLY OPEN



EH2

VALVE	SIZE	A	B	C	D	E
68F	1"	7.8	3.63	8.5	6.4	3.4
68G	1 1/4"	8.1	4.0	8.5	6.6	3.6

CYCLE TIME AND VOLTAGE

MOTOR	12 VDC	24 VDC	24 VAC
U	8 sec	4 sec	4 sec
V	n/a	.75 sec	.75 sec
W	3 sec	1.5 sec	1.5 sec
Y	1.5 sec	n/a	n/a

Materials List

No.	P/N	Description	Qty
1		EH2 Actuator	1
2	EHPT-164	Bracket, SS	1
3	OX-222	Nut, Serrated Flange Hex, .250-20 UNC-2A, SS	2
4	100204	Bolt, Serrated Flange Hex, .250-20 UNC-2A x .5, SS	2
5	EHPT-68F EHPT-68G	Valve Assembly, 1" CS/SS Valve Assembly, 1 1/4" CS/SS	1
6	EHPT-130	Coupler, SS	1
*	EHPT-720 (68F) EHPT-721 (68G)	Valve Repair Kits	1

*Order seperately

