



Design Features:

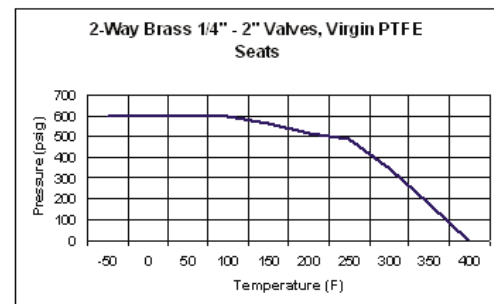
- 2-way Ball Valves 1/4" to 2"
- Max PSI 600 @ 70F
- Manual Override Capabilities
- NEMA 6P Actuator housing
- Ball: 316 SS
- Stem: 316 SS
- Valve Body: Bronze (C84400)
- Seat: Virgin PTFE
- Stem Packing: PTFE

Valve & Actuator Selection Guide				
Valve Size	Size	EH2	EH4	EH3
B	1/4"			X
C	3/8"			X
D	1/2"			X
E	3/4"	X		X
F	1"	X		
G	1 1/4"	X		
H	1 1/2"	X	X	
i	2"	X	X	

84 Series 2-Way Ball Valves				
Valve	Size	Port Type	Weight (lbs.)*	C _v
B	1/4"	FULL	3.2	8.4
C	3/8"	FULL	3.2	7.2
D	3/8"	FULL	3.1	15
E	3/4"	STANDARD	3.8 (EH3) & 5.86 (EH2)	30
F	1"	STANDARD	6.3	43
G	1 1/4"	STANDARD	7.7	48
H	1 1/2"	STANDARD	9.0	84
i	2"	STANDARD	10.1	108

*Weight of Actuator Valve Assembly, for EH4, add 4.4 lbs.

C_v = GPM @ 1 psi drop water
 For GPM @ 5 PSI drop multiply C_v x 2.25
 Vacuum service to 29 inches HG

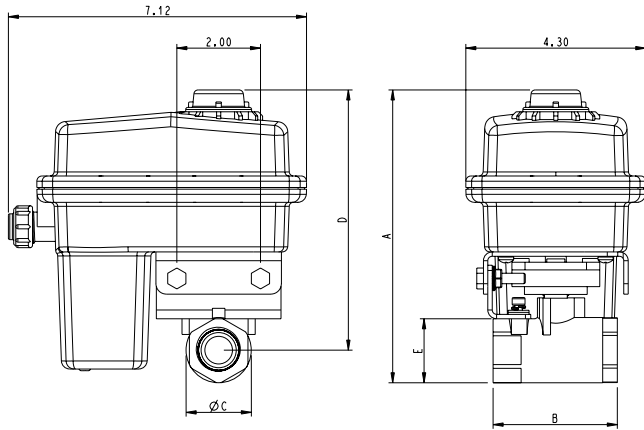


HOW TO ORDER BY PART NUMBER

84D - 60A - W -

VALVE SERIES	VALVE SIZE	WIRING OPTION	MOTOR	OPTION
84 - BRASS VALVE BODY WITH SS BALL 2-WAY BALL VALVES	B - 1/4"	60A - 3 wire on/off (+) SPST 12 VDC	<u>EH3 (1/4"-3/4")</u>	- BLANK FOR NO OPTION 4 - EH4 C - "NC" NORMALLY CLOSED H - "LESS VALVE" KIT O - "NO" NORMALLY OPEN V - 180 DEGREE OPERATION
	C - 3/8"	60T - 3 wire on/off (-) SPST 12VDC	M - .8 sec N - 1.5 sec O - 12 sec P - 2.5 sec Q - 7 sec	
	D - 1/2"	60 - 4 wire on/off with feedback, + output @ OPEN	<u>EH2 (3/4"-2")</u>	
	E - 3/4"	66 - 3 wire on/off SPST 24VAC	U - 8 sec W - 3 sec Y - 1.5 sec Z - .5 sec V* - .75 sec	
	F - 1"	55 - 4 wire on/off SPST 12VDC	*24V Only	
	G - 1 1/4"	50K - 2 wire DPDT	All @ 13.8 VDC	
	H - 1 1/2"	41 - 2 wire DPDT with 5k Pot.		
	I - 2"	62 - 4 wire regulating 12VDC 41S - SL Series Control 60AE - 60A with 2 dry switches 50KE - 50K with 2 dry switches 60F - SPST with two 12V + outputs		
		Other options available, consult factory		

EH2



VALVE	SIZE	A	B	C	D	E
84E	3/4"	7.0	3.0	1.6	6.2	1.6
84F	1"	7.3	3.4	1.8	6.5	1.9
84G	1 1/4"	7.7	4.0	2.2	6.9	2.3
84H	1 1/2"	8.5	4.4	2.7	7.6	2.8
84i	2"	8.6	4.7	3.0	7.7	3.1

CYCLE TIME AND VOLTAGE

MOTOR	12 VDC	24 VDC	24 VAC
U	8 sec	4 sec	4 sec
V	n/a	.75 sec	.75 sec
W	3 sec	1.5 sec	1.5 sec
Y	1.5 sec	n/a	n/a
Z*	.5 sec	n/a	n/a

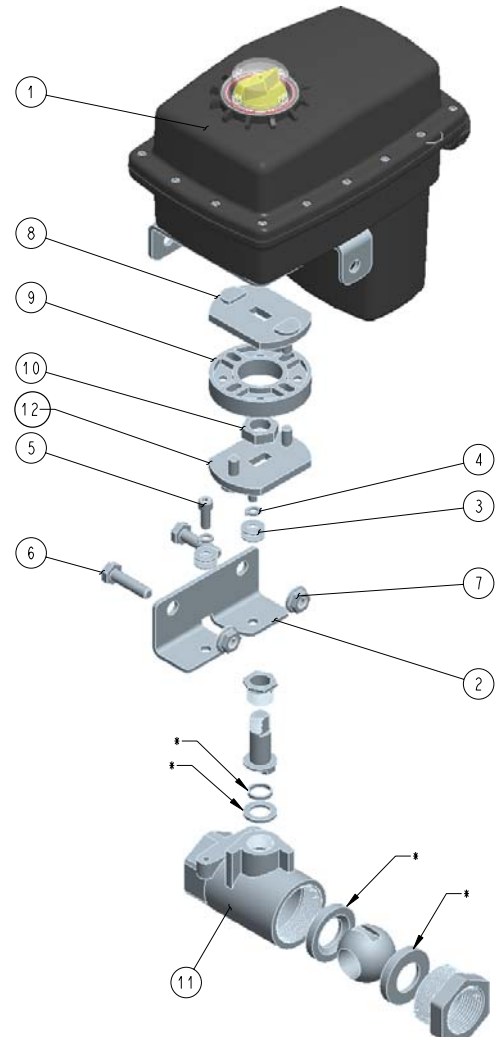
* Limited Applications, Consult Factory

Materials List

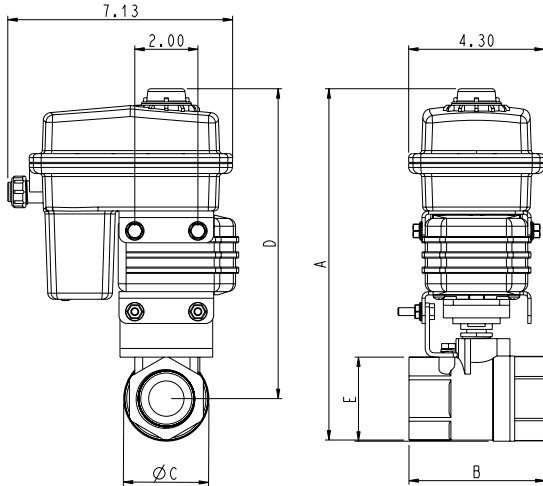
No.	P/N	Description	Qty
1		EH2 Actuator	1
2	EHPT-161-L** EHPT-161	Bracket, SS for 84E & 84F Bracket, SS for 84H & 84i	1
3	EHPT-150	Washer, #10 18-8, SS	4
4	EHPT-109	Lock Washer, SS	2
5	EHPT-151	Bolt, 10-24 x 1/2", SS	2
6	EHPT-174	Bolt, 1/4"-20 x 1" 8-18, SS	2
7	OX-222	Nut, Serrated Flange Hex, .250-20 UNC-2A, SS	2
8	EHPT-1118	Coupler (Upper), SS	1
9	EHPT-1117	Donut, NYLON	1
10	EH2-1163	Jam Nut, SS	1
11	EHPT-84E EHPT-84F EHPT-84G EHPT-84H EHPT-84i	Valve Assembly, 3/4" 2-way Bronze Valve Assembly, 1" 2-way Bronze Valve Assembly, 1 1/4" 2-way Bronze Valve Assembly, 1 1/2" 2-way Bronze Valve Assembly, 2" 2-way Bronze	1
12	EHPT-1118** EHPT-1120	Coupler (Upper), SS 84E & 84F (Lower), SS 84G, 84H & 84i	1
*	EHPT-710 (84E) EHPT-711 (84F) EHPT-712 (84G) EHPT-713 (84H) EHPT-714 (84i)	Valve Repair Kit	1

*Order separately

**Shown in assembly



EH4



VALVE	SIZE	A	B	C	D	E
84H	1 1/2"	11.2	4.4	2.7	9.8	2.8
84i	2"	11.3	4.7	3.0	9.9	3.1

CYCLE TIME AND VOLTAGE

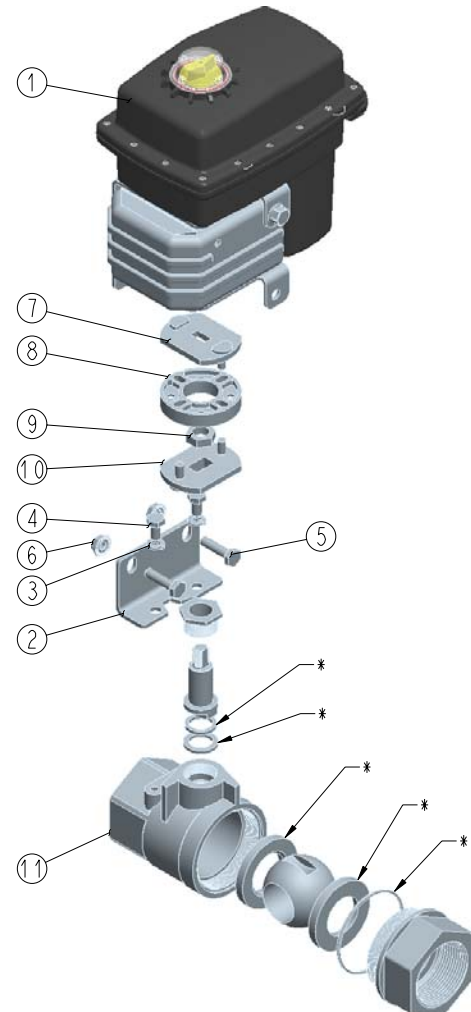
MOTOR	12 VDC	24 VDC	24 VAC
U	16 sec	8 sec	8 sec
V	n/a	1.5 sec	1.5 sec
W	6 sec	3 sec	3 sec
Y	3 sec	n/a	n/a
Z*	1 sec	n/a	n/a

* Limited Applications, Consult Factory

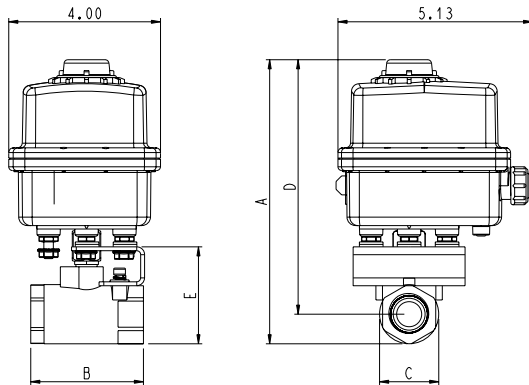
Materials List

No.	P/N	Description	Qty
1		EH4 Actuator	1
2	EHPT-161-L	Bracket, SS	1
3	EHPT-152	Lockwasher, SS	2
4	EHPT-147	Bolt, 1/4-20 x 1/2" 8-18, SS	2
5	EHPT-174	Bolt, 1/4"-20 x 1" 8-18, SS	2
6	OX-222	Nut, Serrated Flange Hex, .250-20 UNC-2A, SS	2
7	EHPT-1118	Coupler, SS	1
8	EHPT-1117	Donut, NYLON	1
9	EH2-1163	Jam Nut, SS	1
10	EHPT-1120	Coupler, SS	1
11	EHPT-84H EHPT-84i	Valve Assembly, 1 1/2" 2-way Bronze Valve Assembly, 2" 2-way Bronze	1
*	EHPT-713 (84H) EHPT-714 (84i)	Valve Repair Kit	1

*Order separately



EH3



VALVE	SIZE	A	B	C	D	E
84B	1/4"	6.8	2.0	1.1	6.0	1.1
84C	3/8"	6.8	2.0	1.1	6.0	1.1
84D	1/2"	6.9	2.25	1.2	6.1	1.2
84E	3/4"	7.5	3.0	1.6	6.7	1.6

CYCLE TIME AND VOLTAGE

MOTOR	12/24 VDC & 24 VAC
M	.8 sec
N	1.5 sec
O	12 sec
P	2.5 sec
Q	7 sec

For 24V units, internal voltage is stepped down to 15V

Materials List

No.	P/N	Description	Qty
1		EH3 Actuator	1
2	EH3-174	Bracket, SS	1
3	EH2-1141	Washer, SS	6
4	EHPT-150	Washer #10 18-8, SS	2
5	EHPT-109	Lock Washer #10, SS	2
6	EH-158	Bolt, #10-24 x 3/8", SS	1
7	EH3-84B EH3-84C EH3-84D EHPT-84E	Valve Assembly, 1/4" 2-way Bronze Valve Assembly, 3/8" 2-way Bronze Valve Assembly, 1/2" 2-way Bronze Valve Assembly, 3/4" 2-way Bronze	1
8	EH-145** EH-146	Coupler, SS 84B, 84C & 84D Coupler, SS 84E	1
*	EHPT-710 (84E)	Valve Repair Kit	1

*Order seperately

**Shown in assembly

