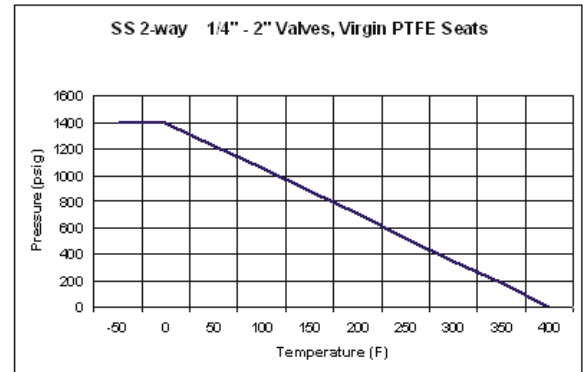




## Design Features:

- 2-way Ball Valves 1/4" to 2"
- Max PSI 1400 @ 70F
- Manual Override Capabilities
- NEMA 6P Actuator housing
- Ball: 316 SS
- Stem: 316 SS
- Valve Body: SS
- Seat: Virgin PTFE
- Stem Packing: PTFE



88 Series 2-Way Ball Valves				
Valve	Size	Port Type	Weight (lbs.)*	C <sub>v</sub>
B	1/4"	FULL	3.2	8.4
C	3/8"	FULL	3.2	7.2
D	3/8"	FULL	3.1	15
E	3/4"	STANDARD	3.8 (EH3) & 5.86 (EH2)	30
F	1"	STANDARD	6.3	43
G	1 1/4"	STANDARD	7.7	48
H	1 1/2"	STANDARD	9.0	84
i	2"	STANDARD	10.1	108

Valve & Actuator Selection Guide				
Valve Size	Size	EH2	EH4	EH3
B	1/4"			X
C	3/8"			X
D	1/2"			X
E	3/4"	X		X
F	1"	X		
G	1 1/4"	X		
H	1 1/2"	X	X	
i	2"	X	X	

\*Weight of Actuator Valve Assembly, for EH4, add 4.4 lbs.

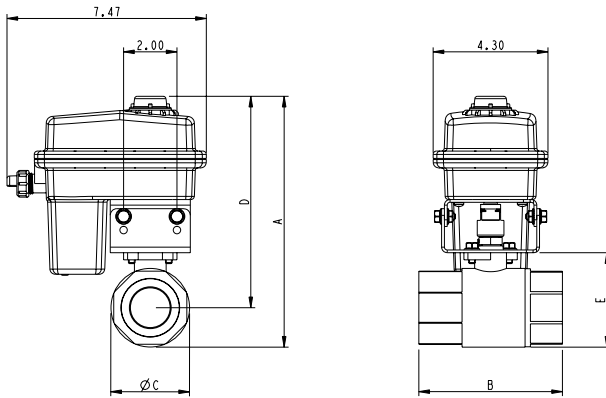
C<sub>v</sub> = GPM @ 1 psi drop water  
 For GPM @ 5 PSI drop multiply C<sub>v</sub> x 2.25  
 Vacuum service to 29 inches HG

## HOW TO ORDER BY PART NUMBER

### 88H - 60A - W -

VALVE SERIES	VALVE SIZE	WIRING OPTION	MOTOR	OPTION
88 - SS 2-WAY BALL VALVES	B - 1/4" C - 3/8" D - 1/2" E - 3/4" F - 1" G - 1 1/4" H - 1 1/2" I - 2"	60A - 3 wire on/off (+) SPST 12VDC 60T - 3 wire on/off (-) SPST 12VDC 60 - 4 wire on/off with feedback, + output @ OPEN 66 - 3 wire on/off SPST 24VAC 55 - 4 wire on/off SPST 12VDC 50K - 2 wire DPDT 41 - 2 wire DPDT with 5k Pot. 62 - 4 wire regulating 12VDC 41S - SL Series Control 60AE - 60A with 2 dry switches 50KE - 50K with 2 dry switches 60F - SPST with two 12V + outputs  Other options available, consult factory	EH3 (1/4"-3/4") M - .8 sec N - 1.5 sec O - 12 sec P - 2.5 sec Q - 7 sec  EH2 (3/4"-2") U - 8 sec W - 3 sec Y - 1.5 sec Z - .5 sec V* - .75 sec  *24V Only  All @ 13.8 VDC	- BLANK FOR NO OPTION 4 - EH4 C - "NC" NORMALLY CLOSED H - "LESS VALVE" KIT O - "NO" NORMALLY OPEN V - 180 DEGREE OPERATION

## EH2



VALVE	SIZE	A	B	C	D	E
88E	3/4"	8.2	3.0	1.6	6.0	1.6
88F	1"	8.2	3.4	1.8	6.0	1.9
88G	1 1/4"	8.6	4.0	2.2	6.4	2.3
88H	1 1/2"	9.3	4.4	2.7	7.1	2.8
88i	2"	9.4	5.5	3.0	7.2	3.5

### CYCLE TIME AND VOLTAGE

MOTOR	12 VDC	24 VDC	24 VAC
U	8 sec	4 sec	4 sec
V	n/a	.75 sec	.75 sec
W	3 sec	1.5 sec	1.5 sec
Y	1.5 sec	n/a	n/a
Z*	.5 sec	n/a	n/a

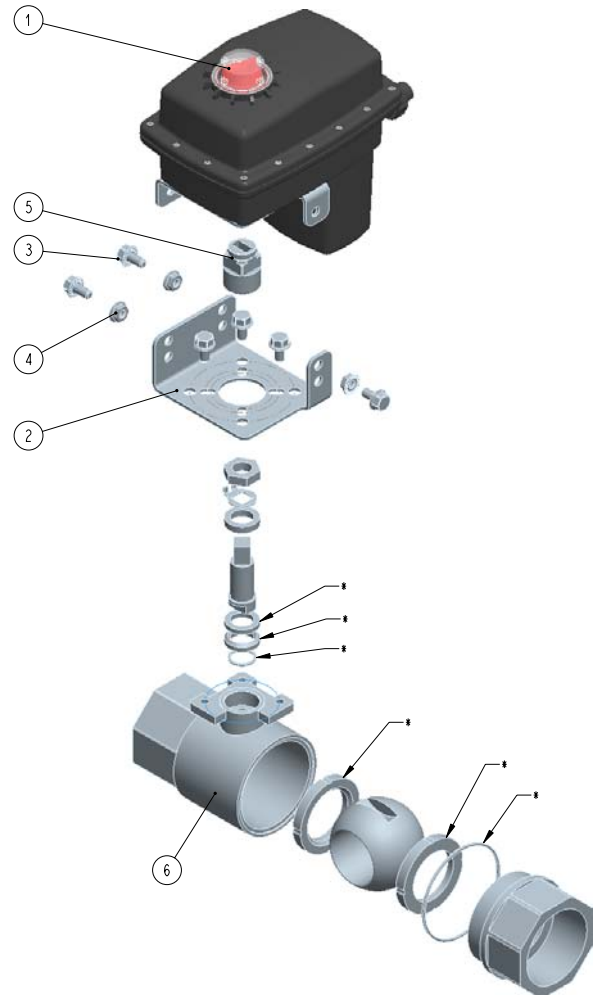
\* Limited Applications, Consult Factory

### Materials List

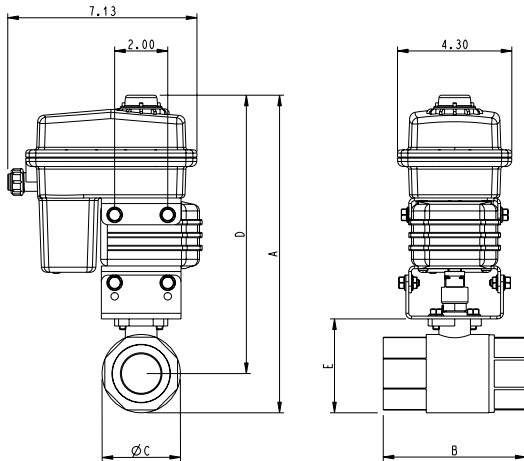
No.	P/N	Description	Qty
1		EH2 Actuator	1
2	100042	Bracket, SS	1
3	100204	Bolt, Serrated Flange Hex, .250-20 UNC-2A x .5, SS	
4	OX-222	Nut	
5	100197	Coupler, SS	1
6	**	Valve Assembly	1
*	EHPT-710 (88E) EHPT-711 (88F) EHPT-712 (88G) EHPT-713 (88H) EHPT-714 (88i)	Valve Repair Kit	1

\*Order seperately

\*\*Consult Factory



## EH4



VALVE	SIZE	A	B	C	D	E
88H	1 1/2"	9.3	4.4	2.7	7.1	2.8
88i	2"	9.4	5.5	3.0	7.2	3.5

### CYCLE TIME AND VOLTAGE

MOTOR	12 VDC	24 VDC	24 VAC
U	16 sec	8 sec	8 sec
V	n/a	1.5 sec	1.5 sec
W	6 sec	3 sec	3 sec
Y	3 sec	n/a	n/a
Z*	1 sec	n/a	n/a

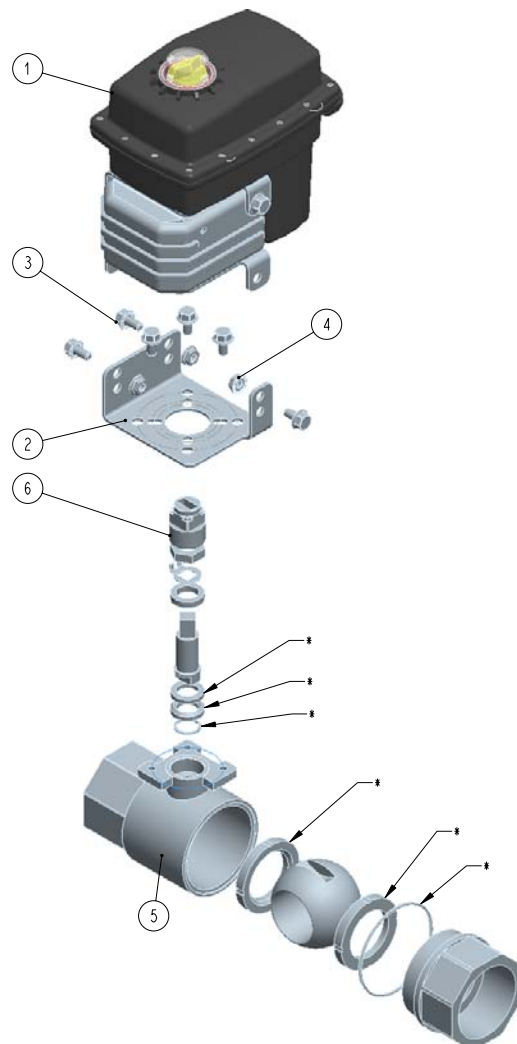
\* Limited Applications, Consult Factory

### Materials List

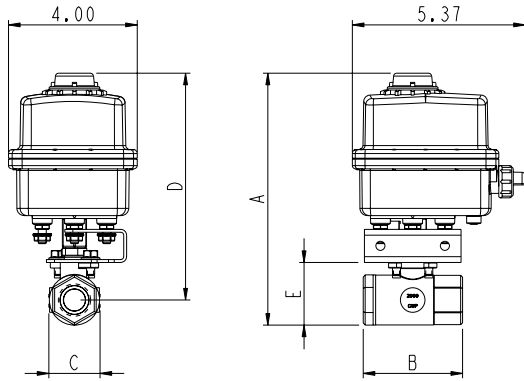
No.	P/N	Description	Qty
1		EH4 Actuator	1
2	100042	Bracket, SS	1
3	100204	Bolt, Serrated Flange Hex, .250-20 UNC-2A x .5, SS	
4	OX-222	Nut	
5	**	Valve Assembly	1
6	100197	Coupler, SS	1
*	EHPT-710 (88E) EHPT-711 (88F) EHPT-712 (88G) EHPT-713 (88H) EHPT-714 (88i)	Valve Repair Kit	1

\*Order seperately

\*\*Consult Factory



## EH3



VALVE	SIZE	A	B	C	D	E
<b>84B</b>	1/4"	6.8	2.0	1.1	6.0	1.1
<b>84C</b>	3/8"	6.8	2.0	1.1	6.0	1.1
<b>84D</b>	1/2"	6.9	2.25	1.2	6.1	1.2
<b>84E</b>	3/4"	7.5	3.0	1.6	6.7	1.6

### CYCLE TIME AND VOLTAGE

MOTOR	12/24 VDC & 24 VAC
M	.8 sec
N	1.5 sec
O	12 sec
P	2.5 sec
Q	7 sec

For 24V units, internal voltage is stepped down to 15V

### Materials List

No.	P/N	Description	Qty
1	**	Valve Assembly	1
2	EHPT-161	Bracket, SS	1
3		EH3 Actuator	1
4	100204	Bolt, Serrated Flange Hex, .250-20 UNC-2A x .5, SS	3
5	EHPT-1117 EHPT-1118 EH2-1163	Coupler, Upper Lower Jam Nut	1 1 1
*	EHPT-710 (88E) EHPT-711 (88F) EHPT-712 (88G) EHPT-713 (88H) EHPT-714 (88i)	Valve Repair Kit	1

\*Order seperately  
\*\*Consult Factory

