

Design Features:

- Compact Valve in Manifold Design
- 3/4" Full Port Outlet by 1 1/2" Full Port Inlet
- Max Working Pressure, 300 psi @ 70 F
- Adjustable Seat Buttress
- NEMA 6P Actuator housing
- Ball: 316 SS
- Stem: 316 SS
- Valve Body: NYLON
- Seat: VIRGIN PTFE
- Stem Seal: Dual VITON O-rings
- Body Seal: EPDM



QH Hairpin Fittings w/ O-rings (for 1" Valve only) (1 for each outlet)

QH_-050	1/2" Straight Hose Barb Fitting
QH_-050L	1/2" 90 Degree Hose Barb Fitting
QH_-075	3/4" Straight Hose Barb Fitting
QH_-075L	3/4" 90 Degree Hose Barb Fitting
QH_-075F	3/4" Female NPT Fitting
QH_-100	1" Straight Hose Barb Fitting
QH_-100L	1" 90 Degree Hose Barb Fitting
QH_-100M	1" Male NPT Fitting

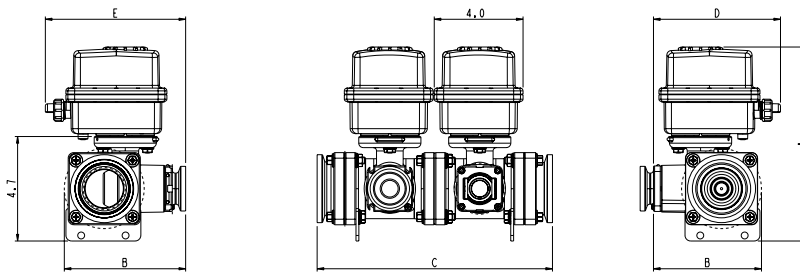
Example P/N: QHP-100L
P - polypropylene
N - nylon



HOW TO ORDER BY PART NUMBER

T - 32AM - D

BALL TYPE	QTY	TYPE	WIRING	MOTOR	OPTIONS (UP TO 3)
T - SS BALL	0 - 9	2 - 2-WAY VALVE w/QHN OUTLET C - 2-WAY VALVE W/ 1" FLANGE OUTLET	A - 60A - 3 wire on/off (+) SPST 12 VDC B - 60B - 3 wire on/off F - 60 4 wire on/off with feedback @ open I - 55 - 4 wire on/off SPST 12VDC K - 50K - 2 wire DPDT N - 41 - 2 wire DPDT with 5k Pot. T - 60T - 3 wire on/off (-) SPST 12 VDC Other options available, consult factory	M - .8 SEC N - 1.5 SEC O - 12 SEC P - 2.5 SEC Q - 7 SEC	- BLANK FOR NO OPTION D - DUAL INLET END CAPS E - 2" FP V-CLAMP INLET W/2" FNPT B - BLANK LID (NO DOME) ON MOTOR CASE C - "NC" NORMALLY CLOSED J - 2" FP V-CLAMP INLET O - "NO" NORMALLY OPEN R - REPLACEMENT ASSEMBLY L - LESS MOUNTING BRACKETS G - REVERSED END CAPS X - BLANK END CAPS BOTH ENDS (QC3)



DIMENSIONS BASED ON STANDARD 2 SECTION ASSEMBLY

STACK	Weight (LBS)	Ø	A	B	C	D	E
1	4.7	3/4	8.8	4.9	6.55	5.7	6.3
2+	*	3/4	8.8	***	**		

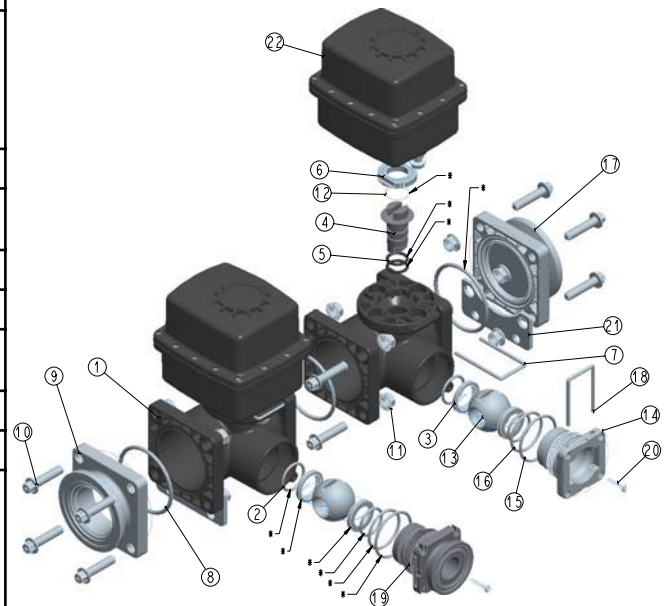
*add 3.3 LBS per each additional section

**add 4.05 per each additional section

***add .6 for QC3-157 fitting

Materials List

No.	P/N	Description	Qty*
1	QC3-300	Valve Body/Manifold, 3/4", NYLON	2
2	QC3-131	O-Ring, #119, EPDM	4
3	QC3-168	Seat, PTFE	4
4	QX4-120	Stem, SS	2
5	QC3-130	O-Ring, #113, EPDM	4
6	QX4-121-N	Stem Retainer, NYLON	2
7	QX-103	Hair Pin, SS	2
8	QC3-134	O-Ring, #229, EPDM	3
9	QX-180-N** QX-181-N QX-182-N QX5-170-N QX5-171-N	End Cap, 1.5" FNPT W/2" SP Flange, NYLON End Cap, 3/8" FNPT Closed Port, NYLON End Cap, 3/8" FNPT Gage Port, NYLON End Cap, 2" FP Clamp QC connection, NYLON End Cap, 2" FP W/2" FNPT, NYLON	1
10	QX-220	Bolt, .3125-18 UNC-2A x 1.42, SS	12
11	QX-221	Nut, Serrated Flanged Hex, .3125-18 UNC-2A, SS	12
12	QC3-170	Thrust Washer, PTFE	2
13	QC3-315	Valve Ball, SS	2
14	QC3-153** QC3-157	Buttress Fitting, 3/4" QHN, NYLON Buttress Fitting, 1" Flanged, NYLON	2
15	QC3-136	O-Ring, #130, EPDM	2
16	QC3-133	O-Ring, #126, EPDM	2
17	QX-181-N** QX-182-N QX5-170-N QX5-171-N QX-180-N	End Cap, 3/8" FNPT Closed Port, NYLON*** End Cap, 3/8" FNPT Gage Port, NYLON End Cap, 2" FP Clamp QC connection, NYLON End Cap, 2" FP W/2" FNPT, NYLON End Cap, 1.5" FNPT W/2" SP Flange, NYLON	1
18	QX-102	Hair Pin, SS	2
19	QC3-157** QC3-153	Buttress Fitting, 1" Flanged, NYLON Buttress Fitting, 3/4" QHP, NYLON	2
20	DJPT-101E	Screw, #8 X 3/4" SS PPH HI/LOW	2
21	EHPT-196** QX-111	Bracket, SS*** Bracket, "L" shaped, SS	2
22		EH3 Actuator	2
*	QC3-RKT	Valve Repair Kit	



*Based on 2 stack assembly

**Shown in assembly

***Other endcaps and brackets available