

## Design Features:

- 3/4-1 1/2" FULL PORT STACK VALVES
- 2" V-CLAMP INLET OPTIONAL
- Max working pressure, 150 psi @ 70 F
- NEMA 6P Actuator housing
- Ball: 316 SS
- Stem: 316 SS
- Valve Body: NYLON OR POLYPROPYLENE
- Seat: Virgin PTFE
- Stem Seal: Dual VITON O-rings
- Body Seal: EPDM



### OH Hairpin Fittings w/ O-rings (for 1" Valve only) (1 for each outlet)

QH_-050	1/2" Straight Hose Barb Fitting
QH_-050L	1/2" 90 Degree Hose Barb Fitting
QH_-075	3/4" Straight Hose Barb Fitting
QH_-075L	3/4" 90 Degree Hose Barb Fitting
QH_-075F	3/4" Female NPT Fitting
QH_-100	1" Straight Hose Barb Fitting
QH_-100L	1" 90 Degree Hose Barb Fitting
QH_-100M	1" Male NPT Fitting

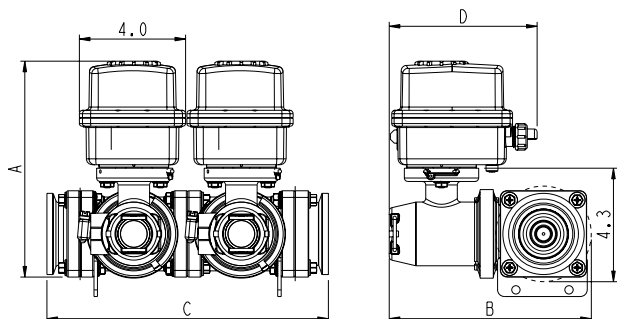


Example P/N: QHP-100L  
P - polypropylene  
N - nylon

## HOW TO ORDER BY PART NUMBER

### 400-12IM-GLE

VALVE MATERIAL	SERIES	QTY	TYPE	WIRING	MOTOR	OPTIONS (UP TO 3)
- Poly N - Nylon	300 - QX3 (3/4" FP) 400 - QX4 (1" FP) 500 - QX5 (1 1/4" FP) 600 - QX6 (1 1/2" FP)  40Y - Y-manifold	0 - 9    2 (only)	Female NPT Outlets 2 - 2-way valve 5 - 3-way BL "ACer" 6 - 3-way BL v-ball regulating valve  Options available only for 1" QX4 "QHP" Quick Connect Fitting A - 2-way valve C - Clamp D - 3-way BL "ACer" V - 3-way BL v-ball regulating valve	A - 60A - 3 wire on/off (+) SPST 12 VDC B - 60B - 3 wire on/off with feedback E - 60 - 4-wire Eliminator, 2-Power, (+) signal Port 1, (+) signal Port 2 F - 60 4 wire on/off with feedback G - 66 - 4-wire, 2 Power, (24v signal)(12v signal) 12VDC, 24VAC/DC H - 50 I - 55 - 4 wire on/off SPST 12VDC K - 50K - 2 wire DPDT N - 41 - 2 wire DPDT with 5k Pot.  Other options available, consult factory	QX3/QX4 M - .8 SEC N - 1.5 SEC O - 12 SEC P - 2.5 SEC Q - 7 SEC  QX5/QX6 U - 8 SEC W - 3 SEC Y - 1.5 SEC Z - .5 SEC	- BLANK FOR NO OPTION D - DUAL INLET END CAPS E - 2" FP V-CLAMP INLET W/2" FNPT F - 1 1/2" FNPT Valve End Cap B - BLANK LID (NO DOME) ON MOTOR CASE C - "NC" NORMALLY CLOSED J - 2" FP V-CLAMP INLET O - "NO" NORMALLY OPEN R - REPLACEMENT ASSEMBLY L - LESS MOUNTING BRACKETS V - 180 degree operation G - REVERSED END CAPS X - BLANK END CAPS BOTH ENDS (QC3)



## QX3/4

DIMENSIONS BASED ON STANDARD ASSEMBLY

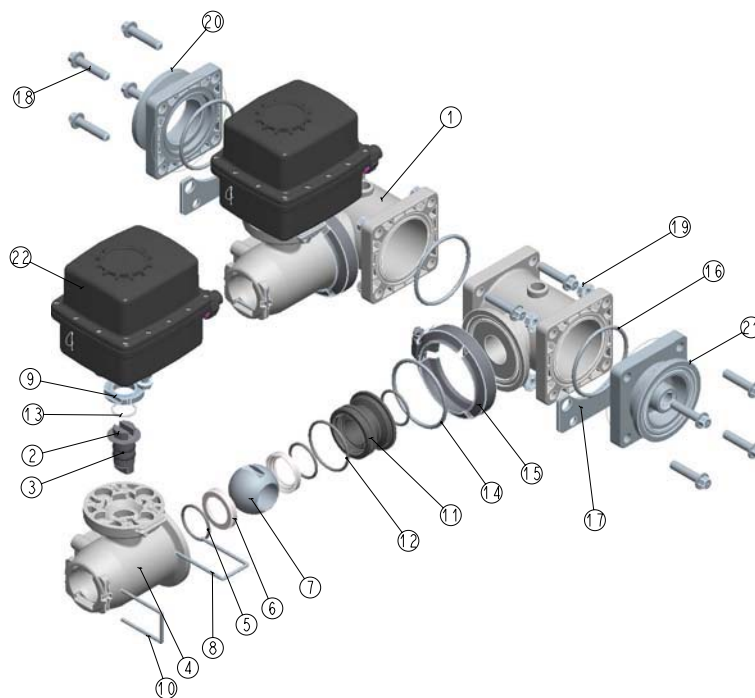
STACK	Weight (LBS)	Ø	A	B	C	D
1	4.7	3/4	8.8	4.9	6.55	4.7
2+	*	3/4	8.8	***	**	4.7

\*add 4.3 LBS per each additional section

\*\*add 4.05 per each additional section

### Materials List

No.	P/N	Description	Qty*
1	QX4-100	Manifold, 1", POLYPROPYLENE	2
2	QX4-120	Stem, SS	2
3	QC3-130	O-ring, #113, VITON	4
4	QX4-110** QX4-140 QX4-115 QX4-170	Valve Body, 1" QHP 1" FNPT 1" Flange 3/4" FNPT	2
5	QX4-161	O-ring, #123, EPDM	6
6	QX4-119	Seat, PTFE	4
7	QX4-130	Valve Ball, SS	2
8	QX-103	Hair Pin, SS	2
9	QX4-121	Stem Retainer	2
10	QX-102	Hair Pin, SS	2
11	QX4-118	Seat Donut	2
12	QX4-162	O-ring, #132, EPDM	2
13	QC3-170	Thurst Washer, PTFE	2
14	QC3-134	O-Ring, #229, EPDM	2
15	QX4-200	Clamp, SS	2
16	QX-201	O-ring, EPDM	3
17	EHPT-196	Bracket, SS***	2
18	QX-220	Bolt, 5/16"-18 x 1 1/2", SS	12
19	QX-221	Nut, 5/16"-18, SS	12
20	QX-180	End Cap, 1.5" NPT w/2" SP Flange***	1
21	QX-181	End Cap, 3/8" FNPT Gage Port***	1
22		EH3 Actuator	
*	QX4-RKT	Valve Repair Kit	

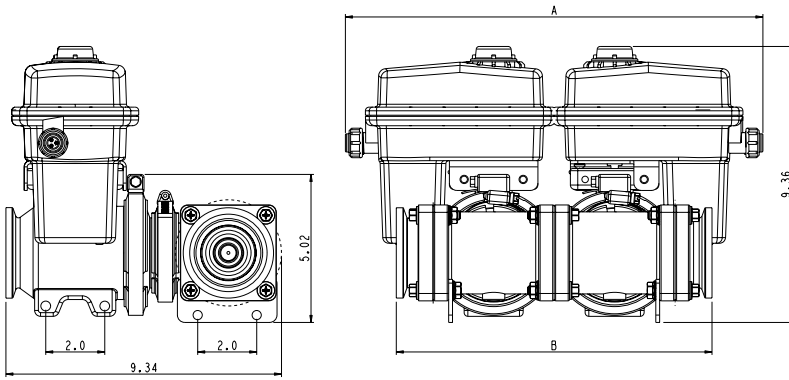


Polypropylene standard, nylon available

\*Based on 2 stack assembly

\*\*Shown in assembly

\*\*\*Other brackets and endcaps available, consult factory



## QX5/6

DIMENSIONS BASED ON STANDARD ASSEMBLY

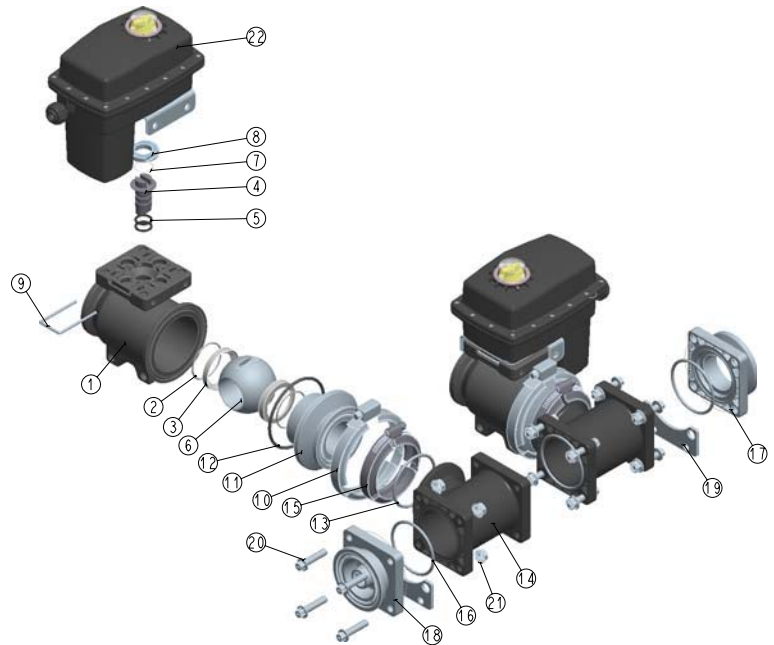
STACK	Weight (LBS)	Ø	A	B
1	9.29	3/4	14.2	10.7
2+	*	3/4	**	**

\*add 6.3 LBS per each additional section

\*\*Consult factory

### Materials List

No.	P/N	Description	Qty*
1	QX5-160* QX5-125	Valve Body, 1.5" FNPT 1.25" FNPT	2
2	QX5-180	O-ring, #131, EPDM	4
3	QX5-149	Seat, PTFE	4
4	QX-101	Stem, SS	2
5	QC3-130	O-ring, #113, VITON	4
6	QX5-150	Valve Ball, SS	2
7	QC3-170	Thrust Washer, PTFE	2
8	QX4-121	Stem Retainer	2
9	QX-103	Hair Pin, SS	2
10	QX5-210	Clamp, SS	2
11	QX5-145	End Cap, 1.5" Flange***	2
12	QX5-181	O-ring, #236, EPDM	2
13	QC3-134	O-ring, #229, EPDM	2
14	QX4-101	Manifold	2
15	QX4-200	Clamp, SS	2
16	QX-201	O-ring, # EPDM	3
17	QX-180	End Cap, 1.5" FNPT w/2" SP Flange***	1
18	QX-181	End Cap, 3/8" FNPT Gage Port***	1
19	EHPT-196	Bracket, SS***	2
20	QX-220	Bolt, .3125-18 UNC-2A x 1.42 SS	12
21	QX-221	Nut, Serrated Flanged Hex, .3125-18 UNC-2A, SS	12
22		EH2 Actuator	2
*	QX5-RKT	Valve Repair Kit	



Polypropylene standard, nylon available

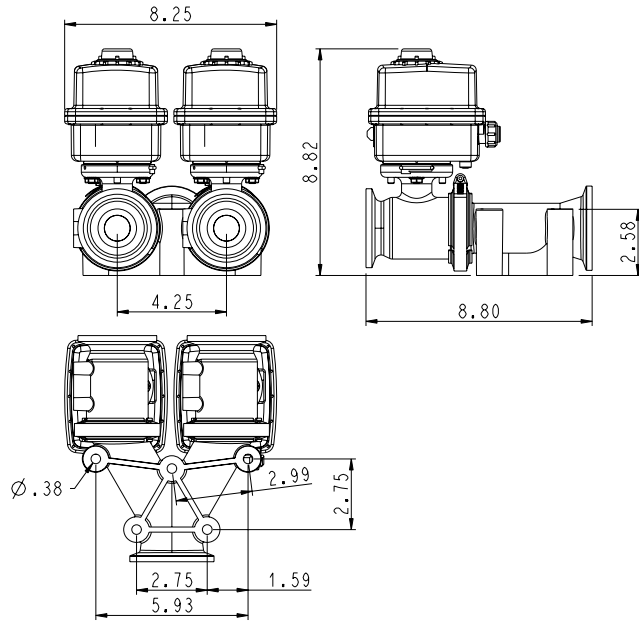
\*Based on 2 stack assembly

\*\*Shown in assembly

\*\*\*Other endcaps and brackets available, consult factory

## Y-Manifold

- Improved flow due to streamline manifold design
- Max Pressure 150 psi @ 70F
- Connection: 2" SP Flange x 2" FP Flange
- Weight: 7.1 lbs.
- Integrated Mounting Pads



### Materials List

No.	P/N	Description	Qty
1	QX-120	Y-Manifold, Polypropylene	1
2	QC3-134	O-Ring, #229, EPDM	1
3	QX4-115	Valve body, 2-way 1", Polypropylene	2
4	QX4-120	Stem, SS	2
5	QC3-130	O-Ring, #113, VITON	4
6	QX4-130	Valve Ball, SS	2
7	QX4-118	Seat Retainer, Polypropylene	2
8	QX4-161	O-Ring, #123, EPDM	4
9	QX4-162	O-Ring, #132, EPDM	2
10	QX4-119	Seat, PTFE	4
11	QX4-121	Stem Retainer, Polypropylene	2
12	QX-103	Hair Pin, SS	2
13	QC3-170	Thrust Washer, PTFE	2
14	QX4-200	Clamp, SS	2
15		EH3 Actuator	1
*	QX4-RKT	Valve Repair Kit	

\*Order seperately

