



### Design Features:

- Mid-size Motorized Valve Actuator
- Valve Sizes: 3/4" to 3"
- 12/24 VDC and 24 VAC Available
- 5 Cycle Time Options
- Maximum Break Away Torque: 300 in/lb
- Maximum Operating Torque: 205 in/lb
- NEMA 6P Actuator housing

\*Torque varies by motor, consult Engineering Data or Factory

### CYCLE TIME AND VOLTAGE

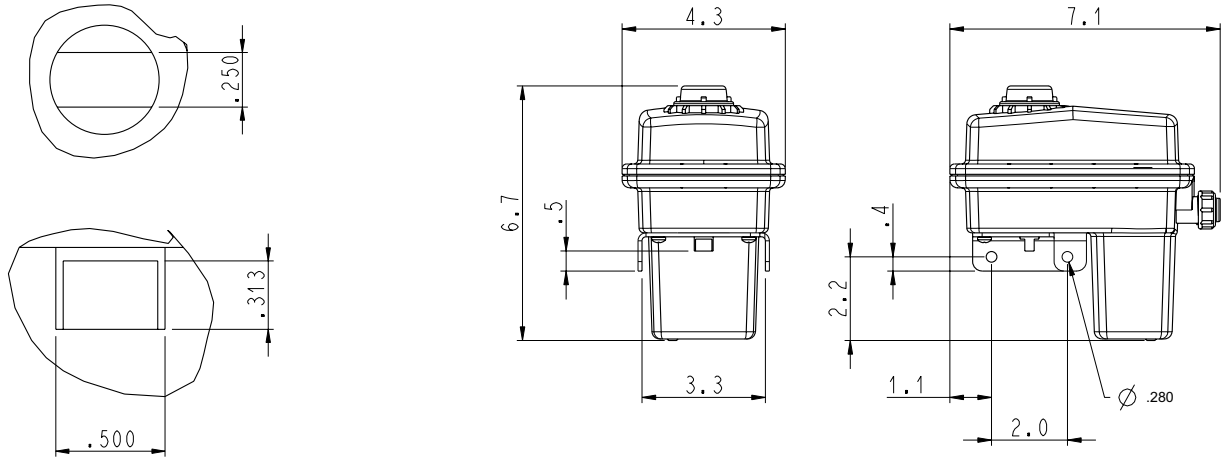
MOTOR	12 VDC	24 VDC	24 VAC
U	8 sec	4 sec	4 sec
V	n/a	.75 sec	.75 sec
W	3 sec	1.5 sec	1.5 sec
Y	1.5 sec	n/a	n/a
Z	.5 sec	n/a	n/a

### HOW TO ORDER BY PART NUMBER

**000 - 60A - W -**

VALVE SERIES	WIRING OPTION	MOTOR	OPTION
000 - ACTUATOR ONLY	60A - 3 wire on/off (+) SPST 12 VDC 60T - 3 wire on/off (-) SPST 12VDC 60 - 4 wire on/off with feedback, + output @ OPEN 66 - 3 wire on/off SPST 24VAC 55 - 4 wire on/off SPST 12VDC 50K - 2 wire DPDT 41 - 2 wire DPDT with 5k Pot. 62 - 4 wire regulating 12VDC 41S - SL Series Control 60AE - 60A with 2 dry switches 50KE - 50K with 2 dry switches 60F - SPST with two 12V + outputs  Other options available, consult factory	U - 8 SEC W - 3 SEC Y - 1.5 SEC Z - .5 SEC  All @ 13.8 VDC  V - .75 SEC*  *24V Only	- BLANK FOR NO OPTION 4 - EH4 B - BLANK LID (NO DOME) ON MOTOR CASE C - "NC" NORMALLY CLOSED H - "LESS VALVE" KIT O - "NO" NORMALLY OPEN V - 180 DEGREE OPERATION

## Output Shaft Detail



Actuator	Weight (lbs)
EH2	3.8

## Materials List

No.	P/N	Description	Qty
1	**	Gear Motor	1
2	800309	Cam Assembly	1
3	EH2-1200-N	Case, Lower, NYLON	1
4	EH2-1161	Bolt, 10-32x5/8" PPH 18/8, SS	4
5	EH-139	O-Ring, #008, VITON	1
6	EH-157	Screw, 8-18x3/8", SS	1
7	EHPT-140	O-Ring, #112, VITON	1
8	EH2-1201-N*	Case, Upper, NYLON	1
	EH2-1202-N	Case, Upper, Blank, NYLON	
9	EH3-114	Dome, LEXAN	1
10	EH-130	O-Ring, #027, SILICONE	1
11	EHPT-1103	Screw, #5x9/16", SS	16
12	EHPT-143	Screw, 10-32x 3/8", SS	2
13	EH2-1178	Screw, 10-32 x 1/4", NYLON	2
14	EH2-1221	O-Ring, SILICONE	1
15	100437	Bracket, SS	1
16	EH3-115-Y*	Flag, Yellow, POLYPROPYLENE	1
	EH3-115-R	Flag, Red, POLYPROPYLENE	
17	**	PCB Assembly	1
18	**	Wire Harness	1
19	EH-104	Cam Retainer	1

\*Shown in assembly

\*\*Consult Factory

