



### Design Features:

- Compact Motorized Valve Actuator
- Valve Sizes: 1/4" to 1"
- 12/24 VDC and 24 VAC Available
- 5 Cycle Time Options
- 3 Position Capability Optional
- Maximim Break Away Torque: 110 in/lb\*
- Maximum Operating Torque: 80 in/lb\*
- NEMA 6P Actuator housing

\*Torque varies by motor, consult Engineering Data or Factory

### CYCLE TIME AND VOLTAGE

MOTOR	12/24 VDC & 24VAC
M	.8 sec
N	1.5 sec
O	12 sec
P	2.5 sec
Q	7 sec

For 24V units, internal voltage is stepped down to 15V

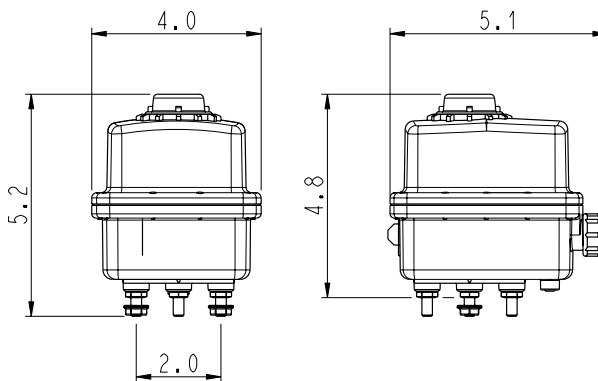
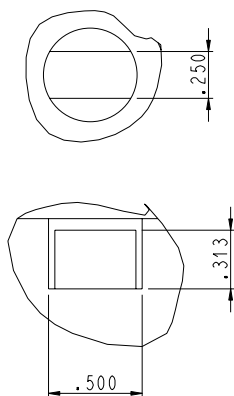
### HOW TO ORDER BY PART NUMBER

**000 - 60A - M -**

VALVE SERIES	WIRING OPTION	MOTOR	OPTION
000 - ACTUATOR ONLY	60A - 3 wire on/off (+) SPST 12 VDC 60T - 3 wire on/off (-) SPST 12VDC 60 - 4 wire on/off with feedback, + output @ OPEN 66 - 3 wire on/off SPST 24VAC 55 - 4 wire on/off SPST 12VDC 50K - 2 wire DPDT 41 - 2 wire DPDT with 5k Pot. 62 - 4 wire regulating 12VDC 41S - SL Series Control 60AE - 60A with 2 dry switches 50KE - 50K with 2 dry switches 60F - SPST with two 12V + outputs  Other options available, consult factory	M - .8 sec N - 1.5 sec O - 12 sec P - 2.5 sec Q - 7 sec  All @ 13.8 VDC	- BLANK FOR NO OPTION B - BLANK LID (NO DOME) ON MOTOR CASE C - "NC" NORMALLY CLOSED H - "LESS VALVE" KIT O - "NO" NORMALLY OPEN V - 180 DEGREE OPERATION

# EH3 Actuator

## Output Shaft Detail



Actuator	Weight (lbs.)
EH3	1.76

## Materials List

No.	P/N	Description	Qty
1	EH3-1003	Case, Lower, NYLON	1
2	EH3-1001	Case, Upper, NYLON Case, Upper, Blank, NYLON	1
3	EHPT-140	O-ring, #112, VITON	1
4	EH-139	O-ring, #008, VITON	1
5	EH3-1030	O-ring, #120, SILICONE	1
6	EH-157	Screw, 8-32 x 13/8", SS	1
7	EH3-138	Screw, 8-32 x 1", SS	1
8	EHPT-1103	Screw, #5x9/16", SS	14
9	EH3-114	Dome, LEXAN	1
10	EH-130	O-ring, #027, SILICONE	1
11	**	Gear Motor	1
12	**	PCB Assembly	1
13	800309	Cam Assembly	1
14	EH-104	Retainer, SS	1
15	EH3-135	Stud, 1/4-20 x 1/2", SS	4
16	QX-222	Nut, Serrated Flange, .250-20 UNC-2A	2
17	**	Wire Harness	1
18	EH3-115-Y* EH3-115-R	Flag, Yellow, POLYPROPYLENE Flag, Red, POLYPROPYLENE	1

\*Shown in assembly

\*\*Consult Factory

