



Design Features:

- Heavy Duty Motorized Valve Actuator
- Valve Sizes: 1 1/2" to 4"
- 12/24 VDC and 24 VAC Available
- 6 Cycle Time Options
- Maximim Break Away Torque: 450 in/lb
- Maximum Operating Torque: 300 in/lb
- NEMA 6P Actuator housing

*Torque varies by motor, consult Engineering Data or Factory

CYCLE TIME AND VOLTAGE

MOTOR	12 VDC	24 VDC	24 VAC
U	16 sec	8 sec	8 sec
V	n/a	1.5 sec	1.5 sec
W	6 sec	3 sec	3 sec
Y	3 sec	n/a	n/a
Z	1 sec	n/a	n/a

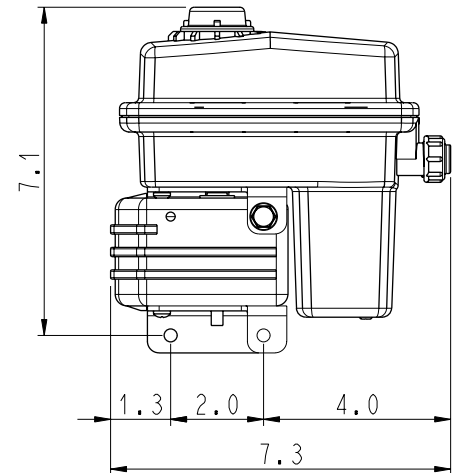
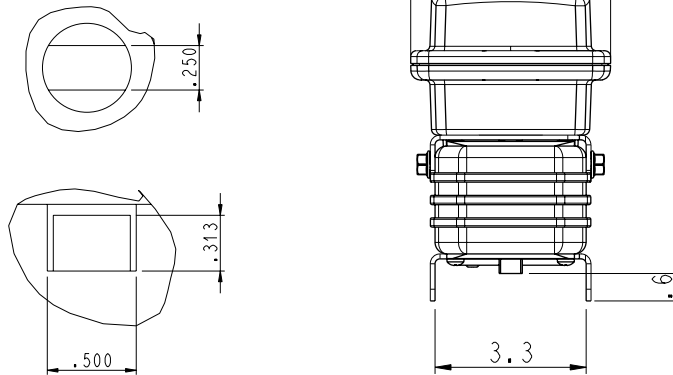
HOW TO ORDER BY PART NUMBER

000 - 60A - W - 4

VALVE SERIES	WIRING OPTION	MOTOR	OPTION
000 - ACTUATOR ONLY	60A - 3 wire on/off (+) SPST 12 VDC 60T - 3 wire on/off (-) SPST 12VDC 60 - 4 wire on/off with feedback, + output @ OPEN 66 - 3 wire on/off SPST 24VAC 55 - 4 wire on/off SPST 12VDC 50K - 2 wire DPDT 41 - 2 wire DPDT with 5k Pot. 62 - 4 wire regulating 12VDC 41S - SL Series Control 60AE - 60A with 2 dry switches 50KE - 50K with 2 dry switches 60F - SPST with two 12V + outputs Other options available, consult factory	U - 8 SEC V - 1.5 SEC** W - 3 SEC Y - 1.5 SEC Z - .5 SEC All @ 13.8 VDC **LIMITED APPLICATIONS CONSULT FACTORY	4 - EH4 B - BLANK LID (NO DOME) ON MOTOR CASE C - "NC" NORMALLY CLOSED H - "LESS VALVE" KIT O - "NO" NORMALLY OPEN V - 180 DEGREE OPERATION

EH4 Actuator

Output Shaft Detail



Actuator	Weight (lbs.)
EH4	8.14

Materials List

No.	P/N	Description	Qty
1	EH4-210	Gear Box	1
2	100437	Bracket, SS	1
3	100204	Bolt, Serrated Flange Hex, .250-20 UNC-2A x .5, SS	3
4	**	Gear Motor	1
5	100437	Bracket, SS	1
6	800309	Cam Assembly	1
7	EH-104	Retainer, SS	1
8	EH3-115-Y* EH3-115-R	Flag, Yellow, POLYPROPYLENE Flag, Red, POLYPROPYLENE	1
9	EH2-1200-N	Case, Lower, NYLON	1
10	EH2-1161	Bolt, 10-32 x 5/8" PPH 18/8, SS	4
11	EH-139	O-RING, #008, VITON	1
12	EH-157	Screw, 8-18 x 3/8", SS	1
13	EHPT-140	O-RING #112, VITON	1
14	EH2-1201-N* EH2-1202-N	Case, Upper, NYLON Case, Upper, Blank, NYLON	1
15	EH3-114	Dome, LEXAN	1
16	EH-130	O-ring, SILICONE	1
17	EHPT-1103	Screw, #5 x 9/16", SS	16
18	EHPT-143	Screw, 10-32 x 1/4", SS	2
19	EH2-1178	Screw, 10-32 x 1/4", NYLON	2
20	EH2-1221	O-ring, SILICONE	1
21	**	PCB ASSEMBLY	1
22	100-0001	Screw, 10-32 x 3/8", SS	4
23	**	WIRE HARNESS	1

*Shown in Assembly

**Consult Factory

