

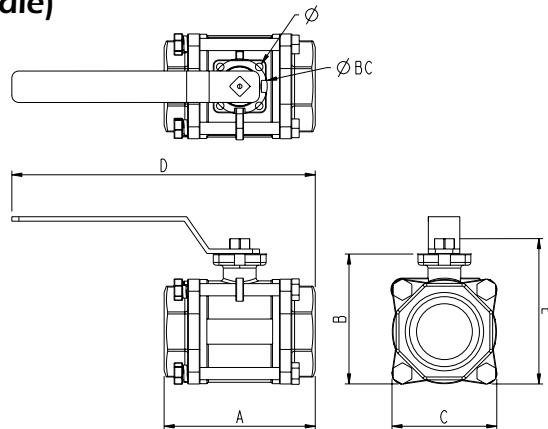


Design Features:

- 3 Piece Swing Out Style Valve
- 2 Way Ball Valves Full Port 1/2" - 2"
- Max PSI 1000
- Ball: 316 SS
- Stem: 316 SS
- Valve Body: CF8M SS
- Seat: Virgin PTFE
- Stem O-Ring: VITON
- Stem Packing: PTFE

Valve Size	Part Number
1/2"	EH-89D
3/4"	EH-89E
1"	EH-89F
1 1/4"	EH-89G
1 1/2"	EH-89H
2"	EH-89i

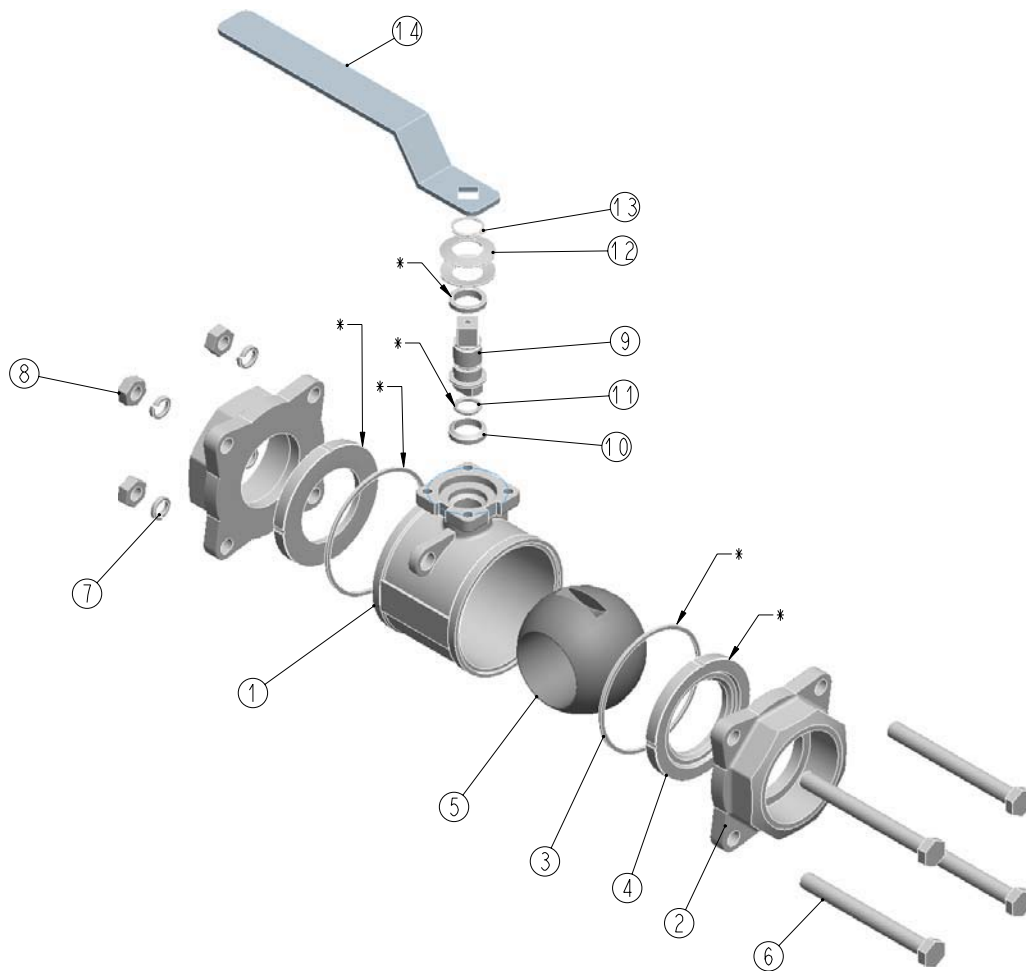
*Add -1 to part number for handle
(ex. EH-89D-1 includes handle)



Valve	Port Type	Valve Size	ISO Mtg	A	B	C	D	E	BC	Ø	Weight (lbs.)	PSI Max	Cv*
89D	Full	1/2"	FO3	2.95	1.54	1.92	6.48	1.89	1.25	.24	5	1000	30
89E	Full	3/4"	FO3	3.15	1.65	2.13	6.58	2.0	1.25	.24	5	1000	51
89F	Full	1"	FO4	3.54	1.97	2.42	7.77	2.48	1.65	.28	9	1000	68
89G	Full	1 1/4"	FO4	4.33	2.20	2.84	8.17	2.71	1.65	.28	9	1000	112
89H	Full	1 1/2"	FO5	4.72	2.56	3.22	10.51	3.19	1.97	.28	10	1000	170
89i	Full	2"	FO5	5.51	2.91	3.95	10.91	3.54	1.97	.28	16	1000	376

*Cv=GPM @ 1 psi drop water

For GPM @ 5 psi drop multiply Cv x 2.25



Materials List

No.	P/N	Description	Qty
1		Valve Body, SS	1
2		Flanged End Cap	2
3		Seal Ring*, PTFE	2
4		Seat*, PTFE	2
5		Valve Ball	1
6		Bolt, SS	4
7		Lock Washer, SS	4
8		Nut, SS	4
9		Stem, SS	1
10		Stem Packing, PTFE	2
11		O-ring, VITON	1
12		Bellville Washer	2
13		Snap Ring, SS	1
14		Handle, SS	1
*	EH-124 (89D) EH-125 (89E) EH-126 (89F) EH-127 (89G) EH-128 (89H) EH-129 (89i)	VALVE REPAIR KIT	1